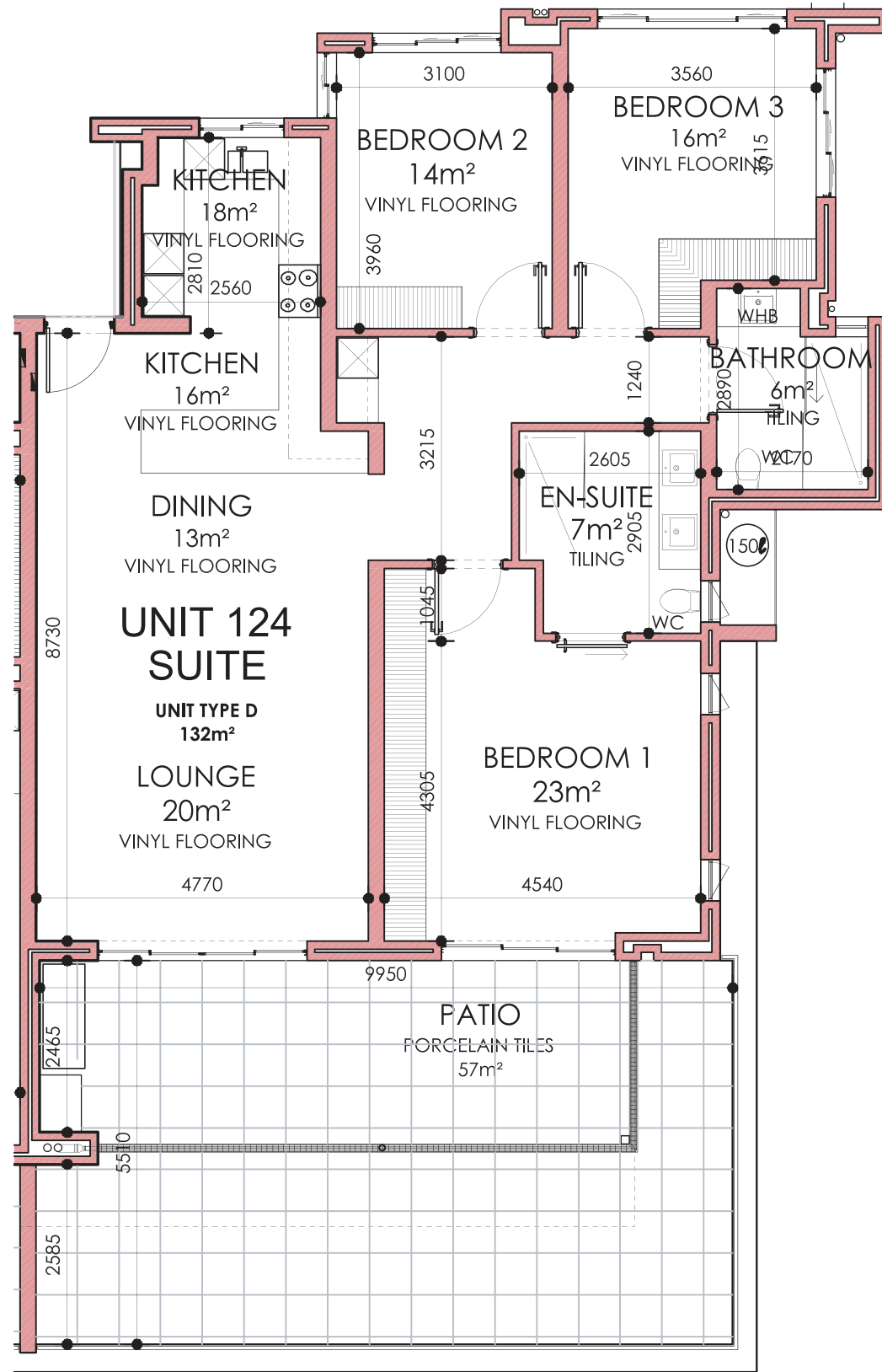
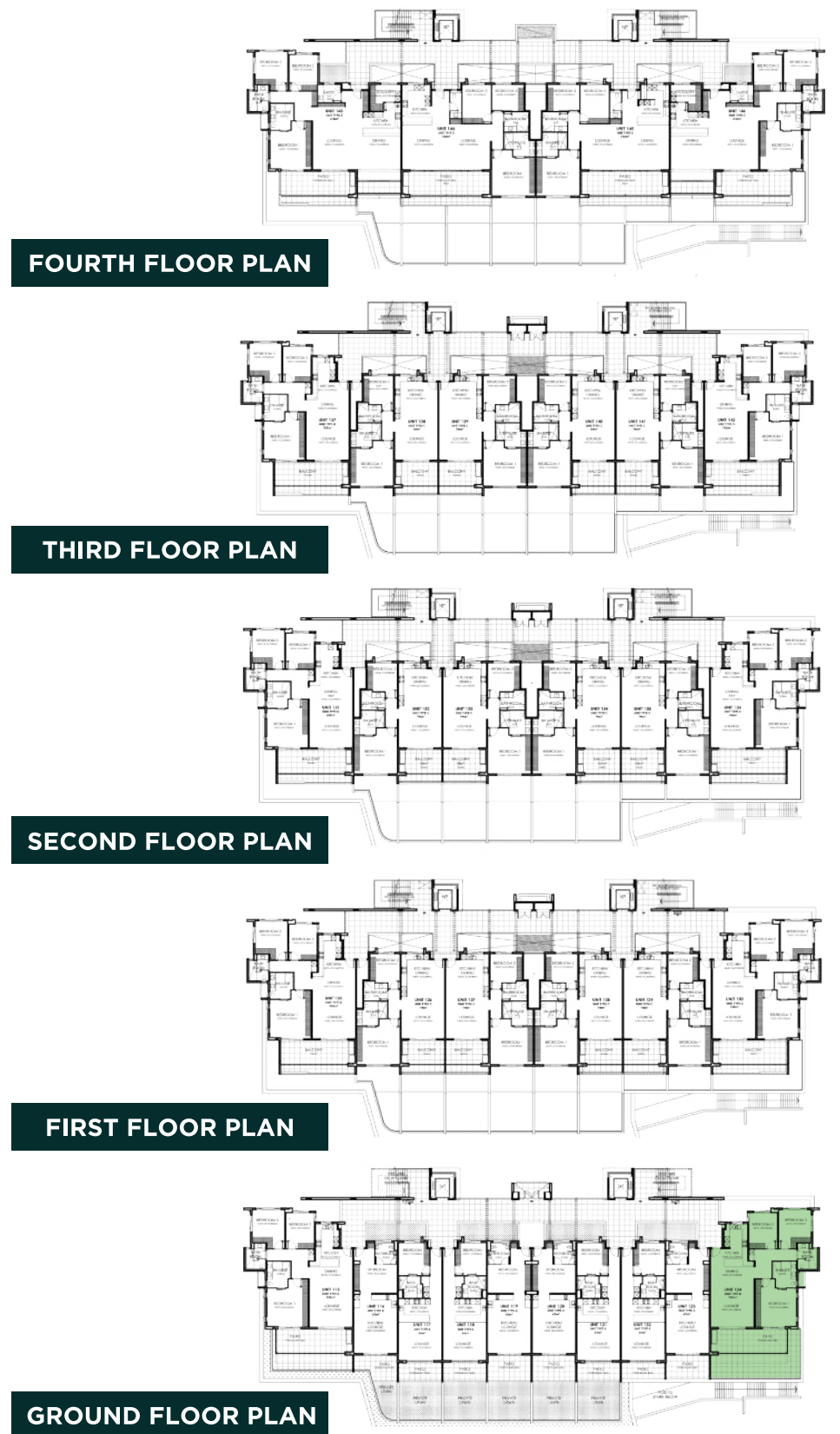


**PRICE R7,100,000 | SALES PRICE (Incl. VAT) - No Transfer Duty**

-  194m
-  x3
-  x2
-  x2
-  5m<sup>2</sup>
-  Yes



**UNIT LAYOUT PLAN**



**FOURTH FLOOR PLAN**

**THIRD FLOOR PLAN**

**SECOND FLOOR PLAN**

**FIRST FLOOR PLAN**

**GROUND FLOOR PLAN**

- AVAILABLE
- SOLD

UNIT SIZE: 132m<sup>2</sup>  
COVERED PATIO SIZE: 35m<sup>2</sup>  
UNCOVERED PATIO SIZE: 22m<sup>2</sup>  
STORE ROOM SIZE: 5m<sup>2</sup>  
BEDROOM: 3  
BATHROOM: 2  
PARKING: 2  
TOTAL SECTION AREA: 194m<sup>2</sup>

**D2**  
UNIT 124

**THE YACHTSMAN**