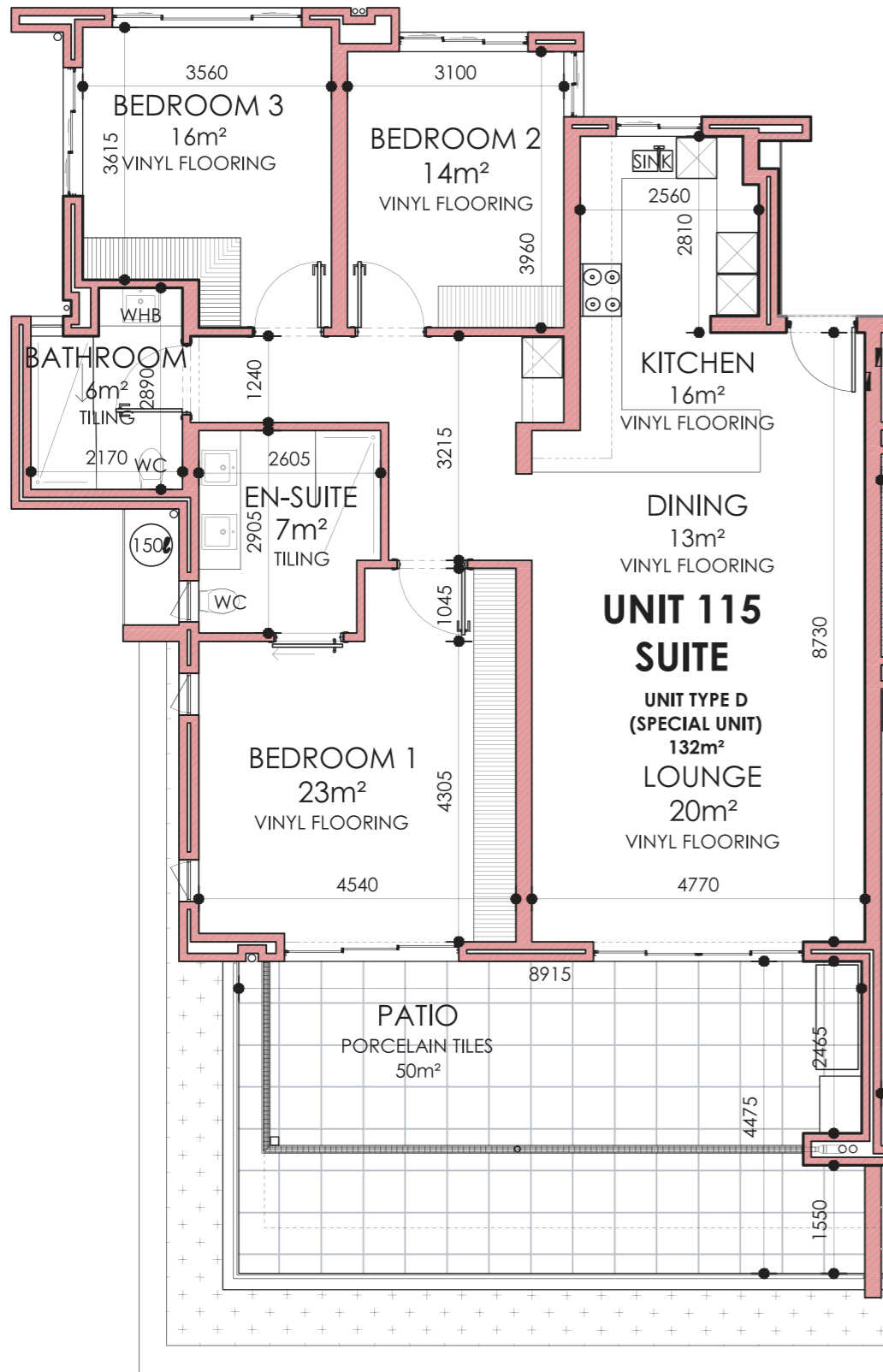


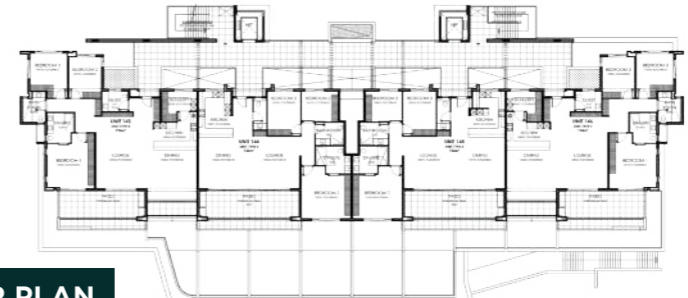
**PRICE R7,100,000 | SALES PRICE (Incl. VAT) - No Transfer Duty**

-  187m
-  x3
-  x2
-  x2
-  5m<sup>2</sup>
-  Yes



**UNIT LAYOUT PLAN**

**FOURTH FLOOR PLAN**



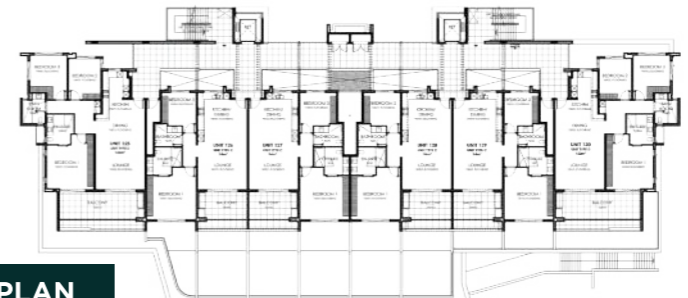
**THIRD FLOOR PLAN**



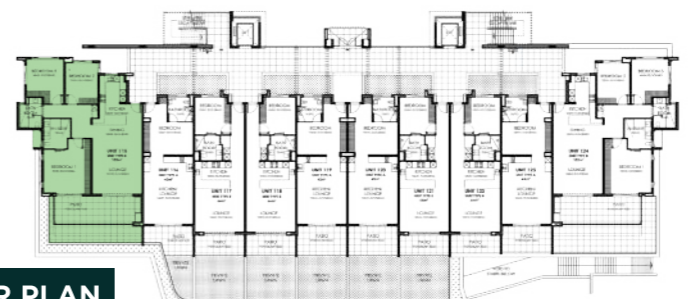
**SECOND FLOOR PLAN**



**FIRST FLOOR PLAN**



**GROUND FLOOR PLAN**



- AVAILABLE
- SOLD

UNIT SIZE: 132m<sup>2</sup>  
COVERED PATIO SIZE: 35m<sup>2</sup>  
UNCOVERED PATIO SIZE: 15m<sup>2</sup>  
STORE ROOM SIZE: 5m<sup>2</sup>  
BEDROOM: 3  
BATHROOM: 2  
PARKING: 2  
TOTAL SECTION AREA: 187m<sup>2</sup>

**D1**  
UNIT 115

**THE YACHTSMAN**