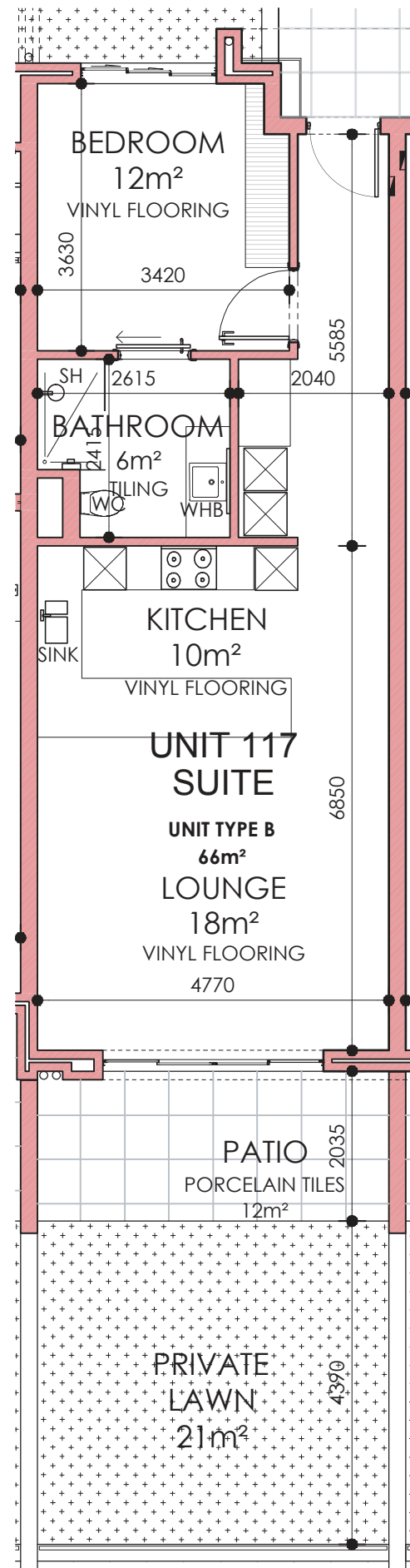
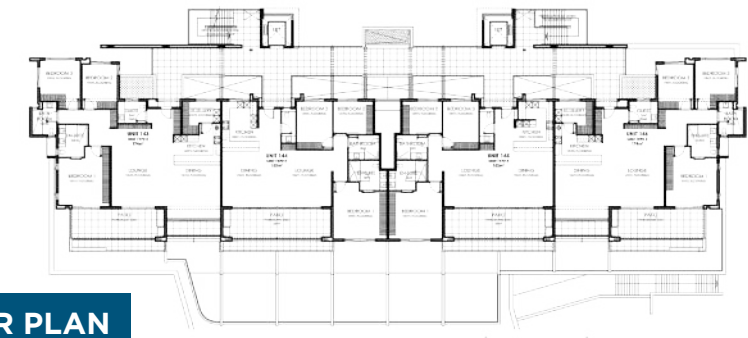


PRICE R2,900,000 | SALES PRICE (Incl. VAT) - No Transfer Duty

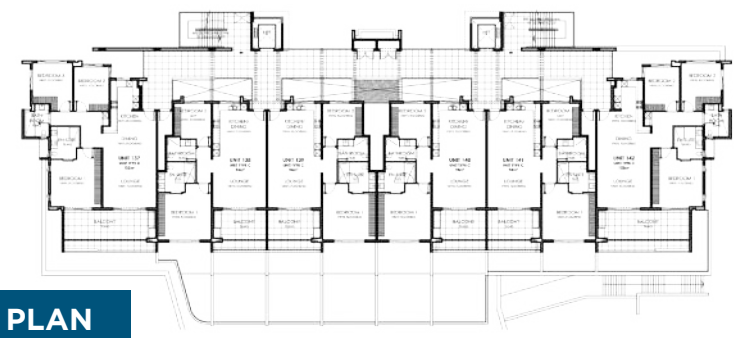
-  78m²
-  x1
-  x1
-  x1
-  Yes



FOURTH FLOOR PLAN



THIRD FLOOR PLAN



SECOND FLOOR PLAN



FIRST FLOOR PLAN



GROUND FLOOR PLAN



■ AVAILABLE
■ SOLD



HARBOUR BAY
VILLAGE

- UNIT SIZE: 66m²
- UNCOVERED PATIO SIZE: 12m²
- EXCLUSIVE USE LAWN: 21m²
- BEDROOM: 1
- BATHROOM: 1
- PARKING: 1

TOTAL SECTION AREA: 78m²

UNIT LAYOUT PLAN

B1
UNIT 117

THE YACHTSMAN