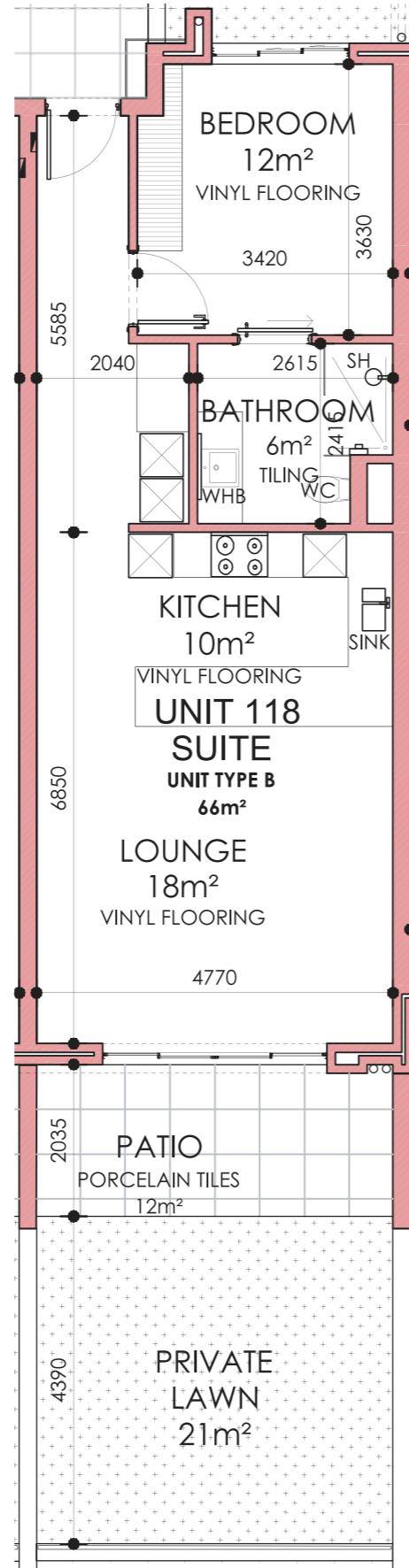
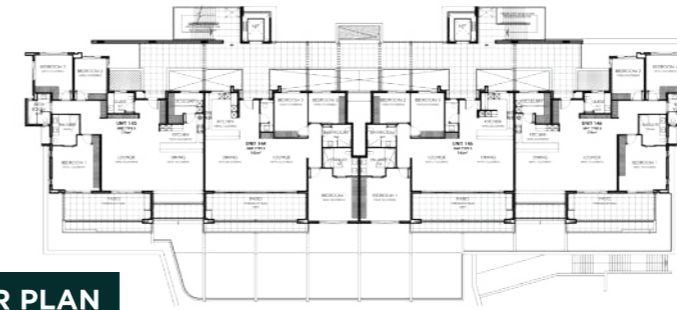


PRICE R2,900,000 | SALES PRICE (Incl. VAT) - No Transfer Duty



UNIT LAYOUT PLAN

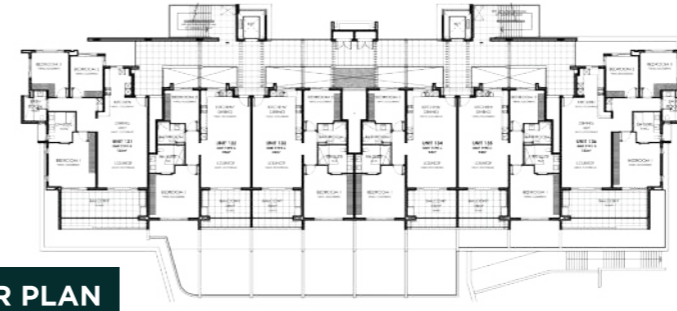
FOURTH FLOOR PLAN



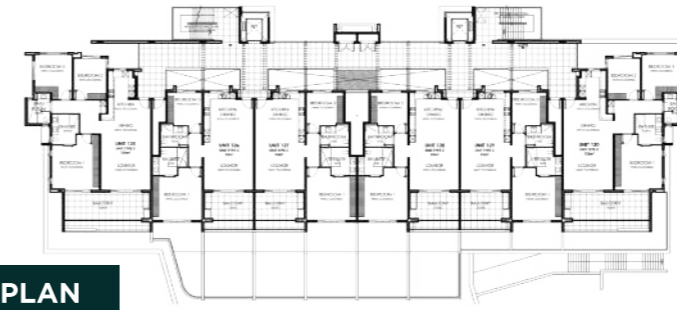
THIRD FLOOR PLAN



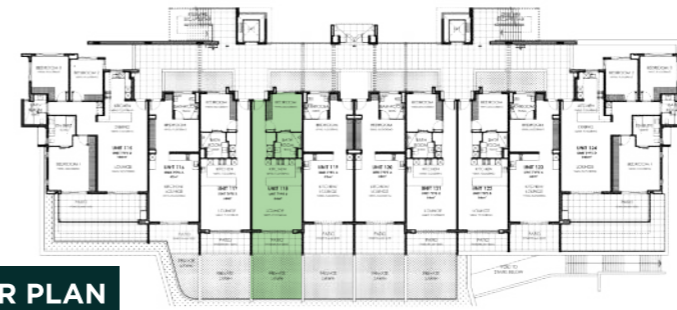
SECOND FLOOR PLAN



FIRST FLOOR PLAN



GROUND FLOOR PLAN



AVAILABLE
SOLD

UNIT SIZE: 66m²
UNCOVERED PATIO
SIZE: 12m²
EXCLUSIVE USE LAWN: 21m²
BEDROOM: 1
BATHROOM: 1
PARKING: 1
TOTAL SECTION
AREA: 78m²

B2
UNIT 118
THE YATCHSMAN