

PRICE R2,450,000 | SALES PRICE (Incl. VAT) - No Transfer Duty

- 56m²
- x1
- x1
- x1
- Yes



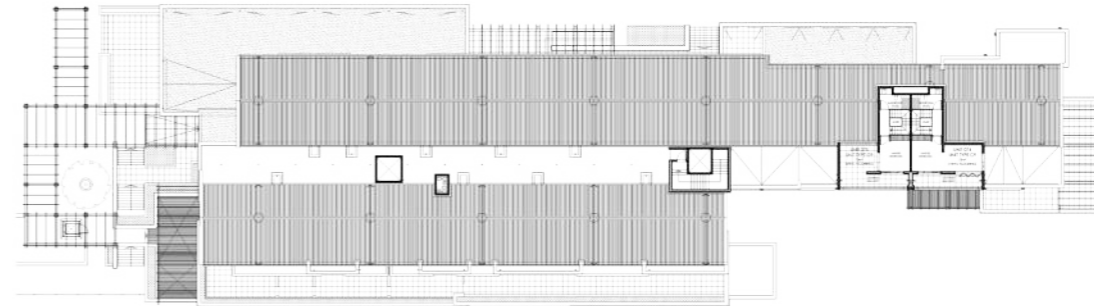
HARBOUR BAY
VILLAGE

UNIT SIZE: 52m²
BALCONY SIZE: 4m²
BEDROOM: 1
BATHROOM: 1
PARKING: 1

TOTAL SECTION
AREA: 56m²

B4
UNIT 53

THE ADMIRAL



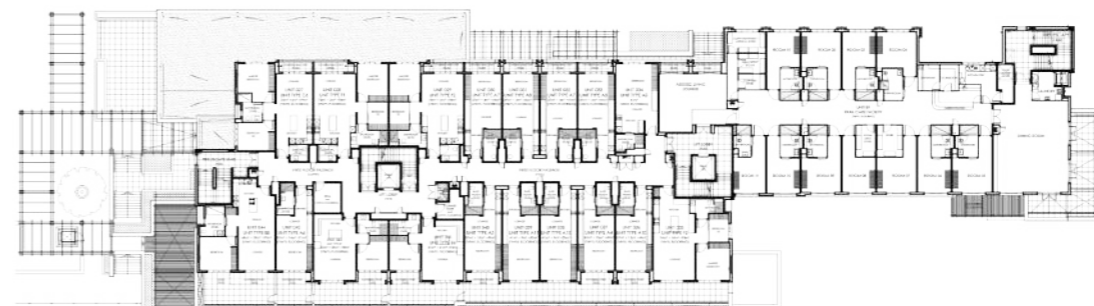
FOURTH FLOOR PLAN



THIRD FLOOR PLAN

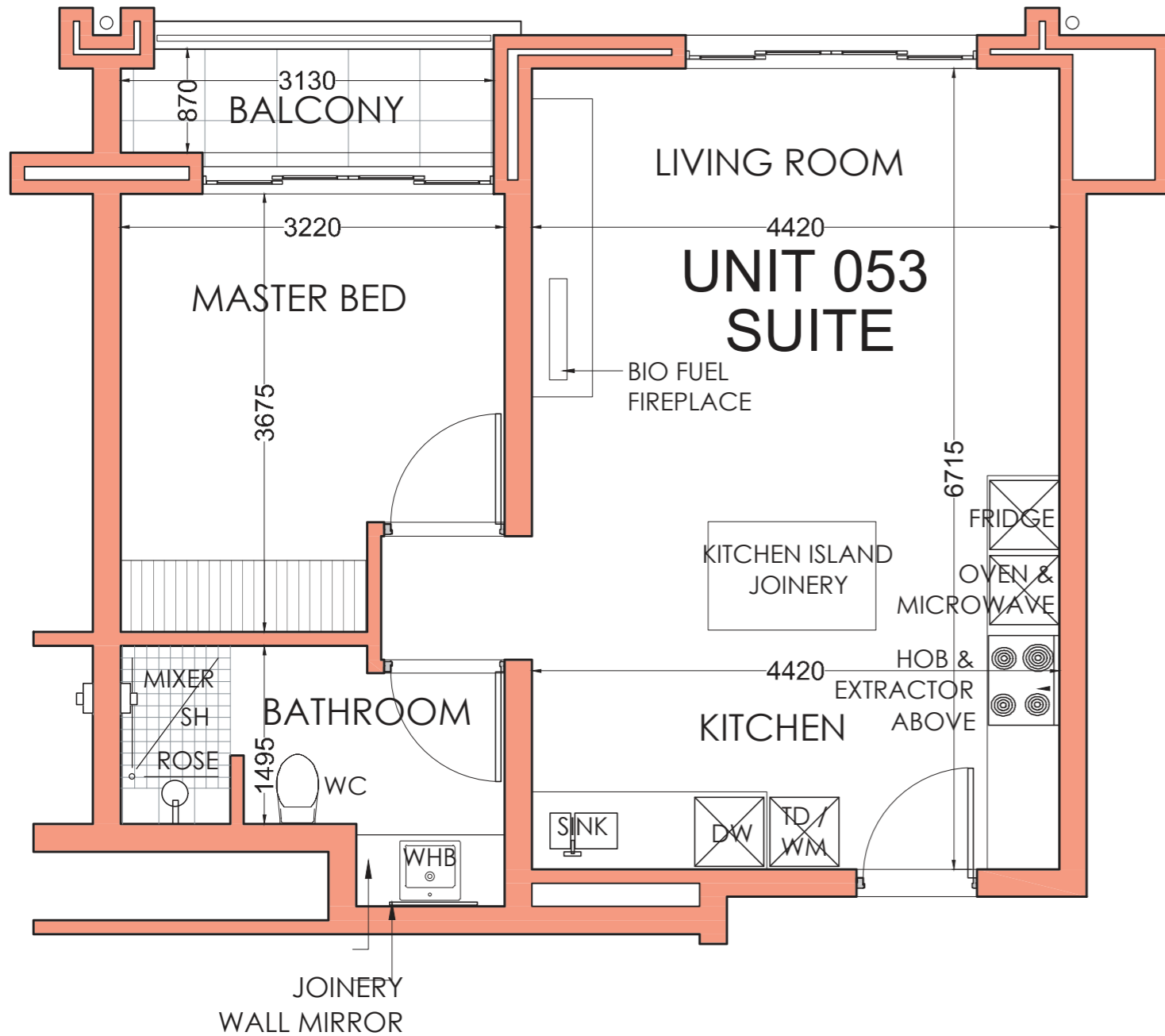


SECOND FLOOR PLAN



FIRST FLOOR PLAN

AVAILABLE
SOLD



UNIT LAYOUT PLAN